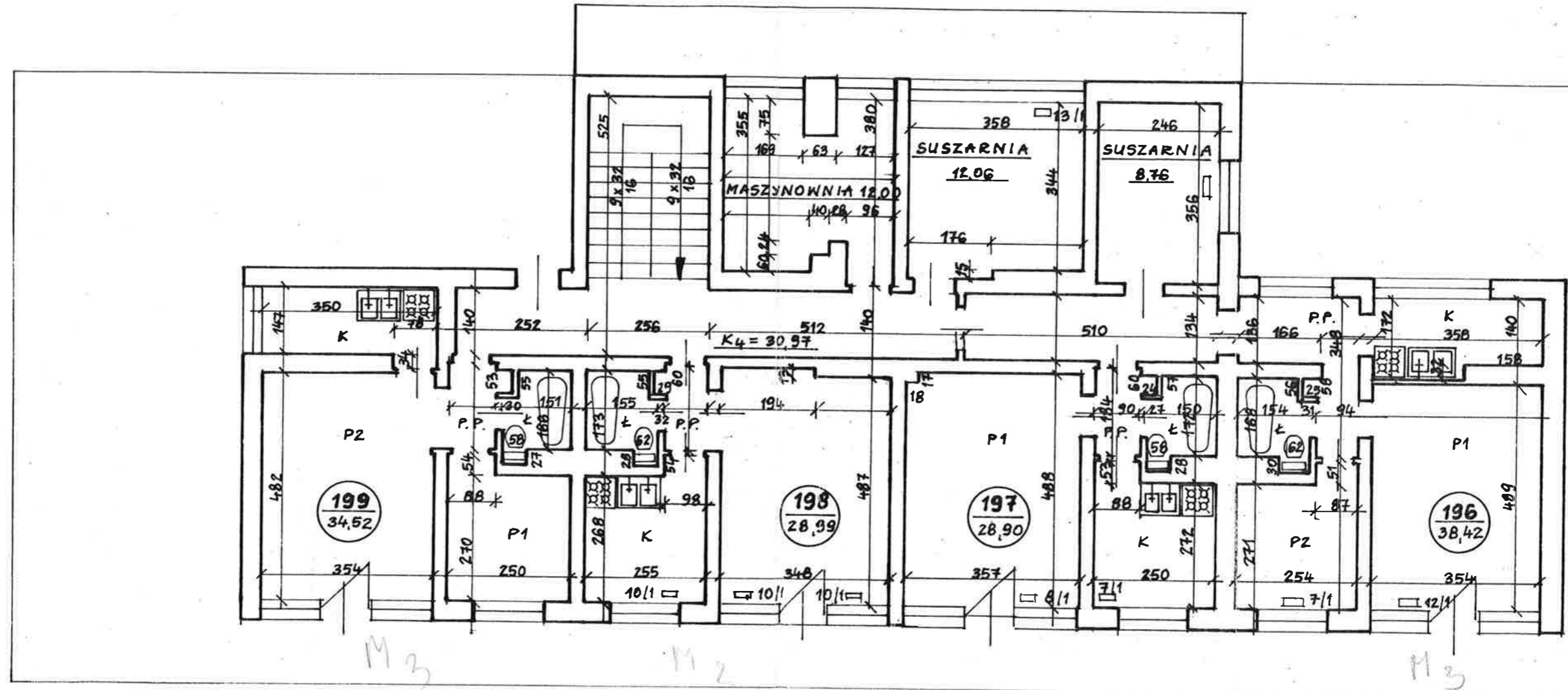


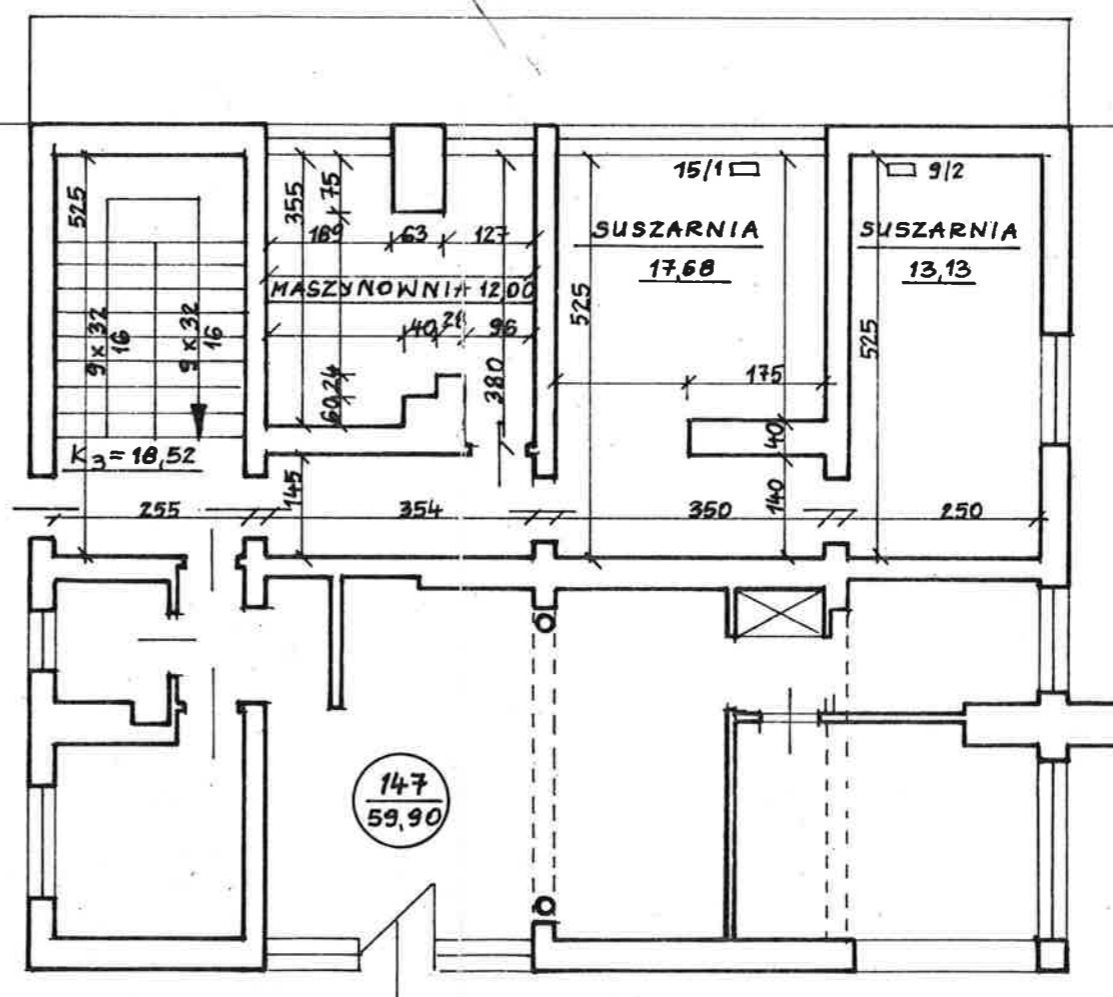
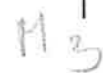
NR 8



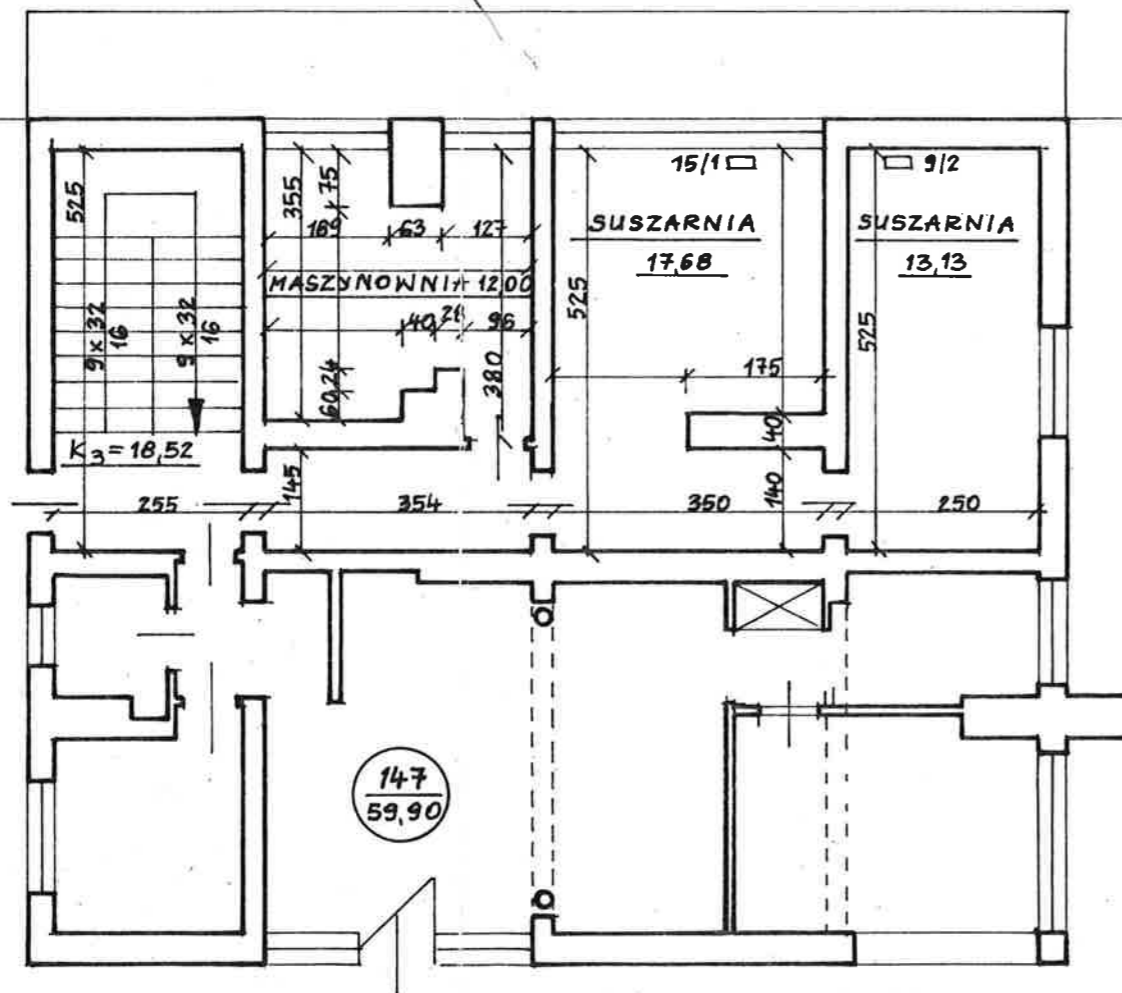
Architectural floor plan showing a grid system and dimensions. The plan includes a large rectangular area divided into a grid of 9x32 units, with a total area of 18.52. A smaller area of 14.7 is also indicated, with a total area of 59.90. The plan includes dimensions for various sections and a circular area labeled "MASZYNOWNIA".

Dimensions and areas shown:

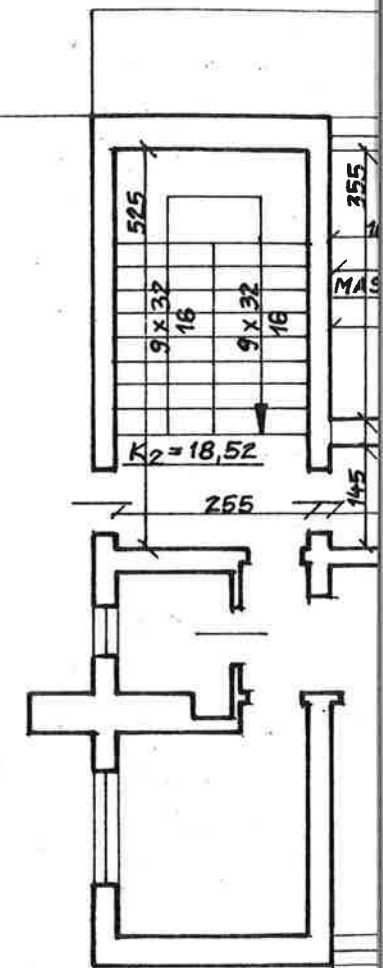
- Grid dimensions: 9 x 32, 16, 5 x 32, 16
- Overall dimensions: 52.5, 35.5, 18.3, 7.5, 6.3, 12, 4.0, 2.0, 6.0, 2.4, 1.45, 3.54, 2.55
- Area calculations: $K_3 = 18.52$, 14.7 , 59.90
- Room label: MASZYNOWNIA

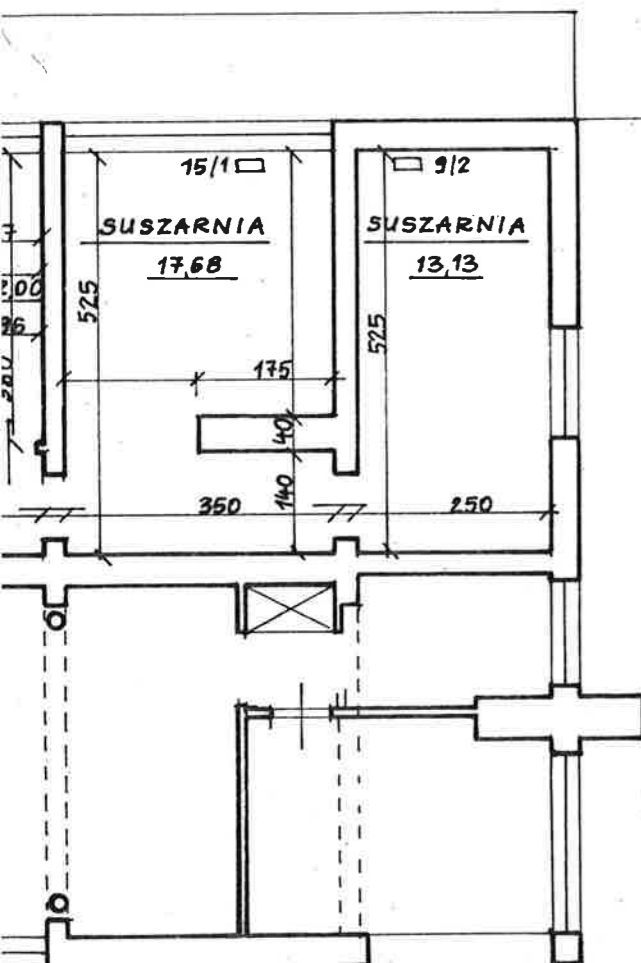


NR 6

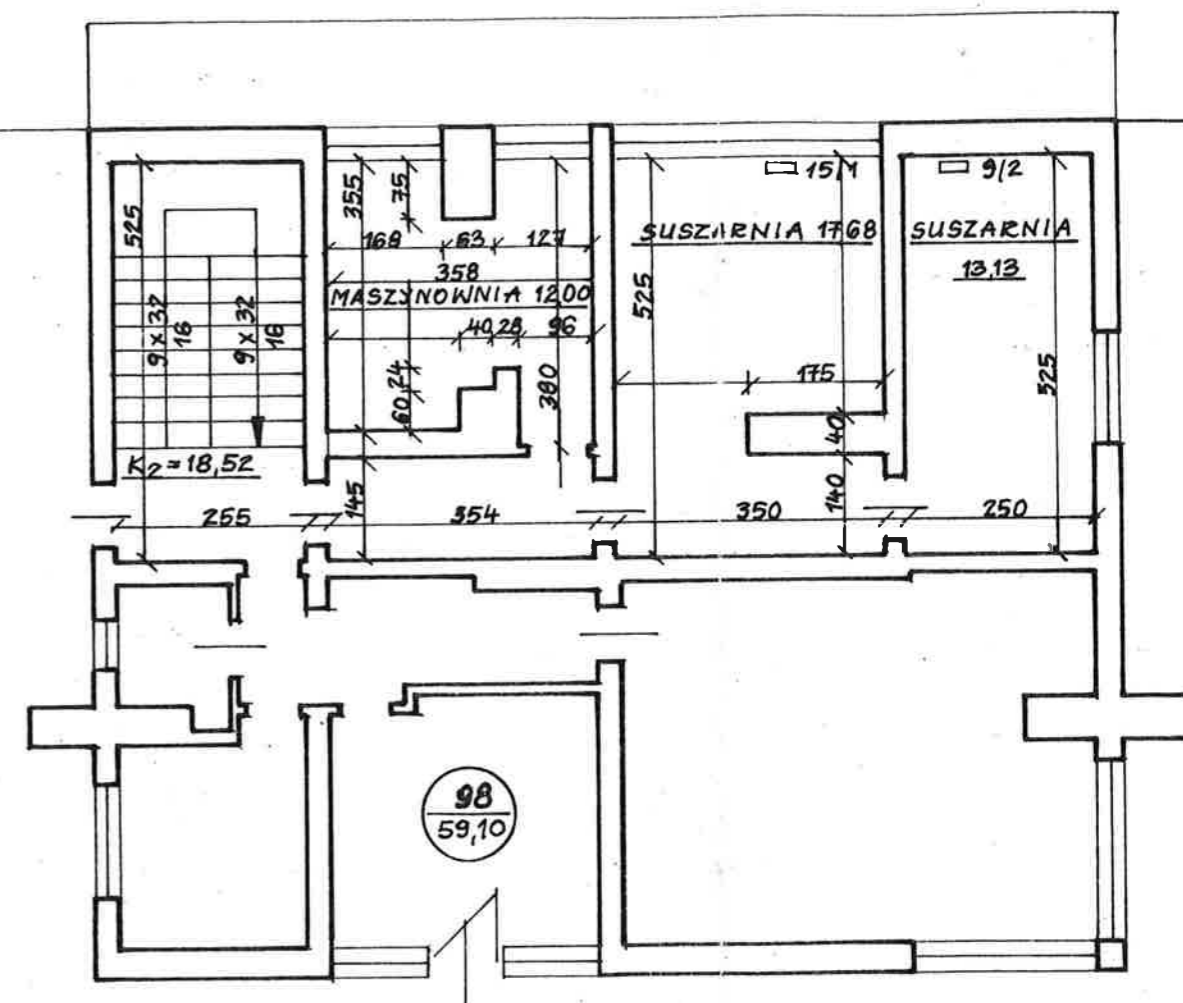


NR 4

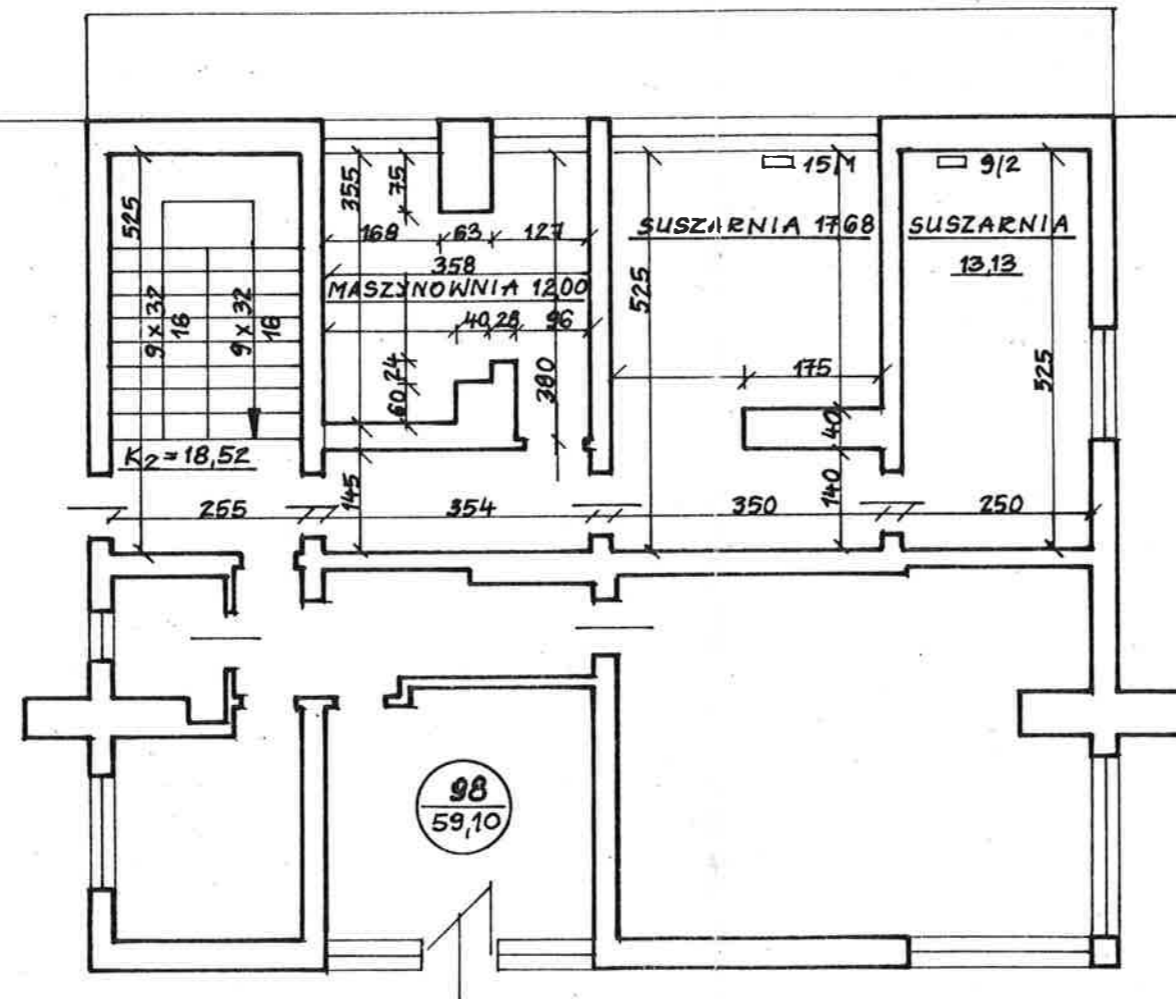


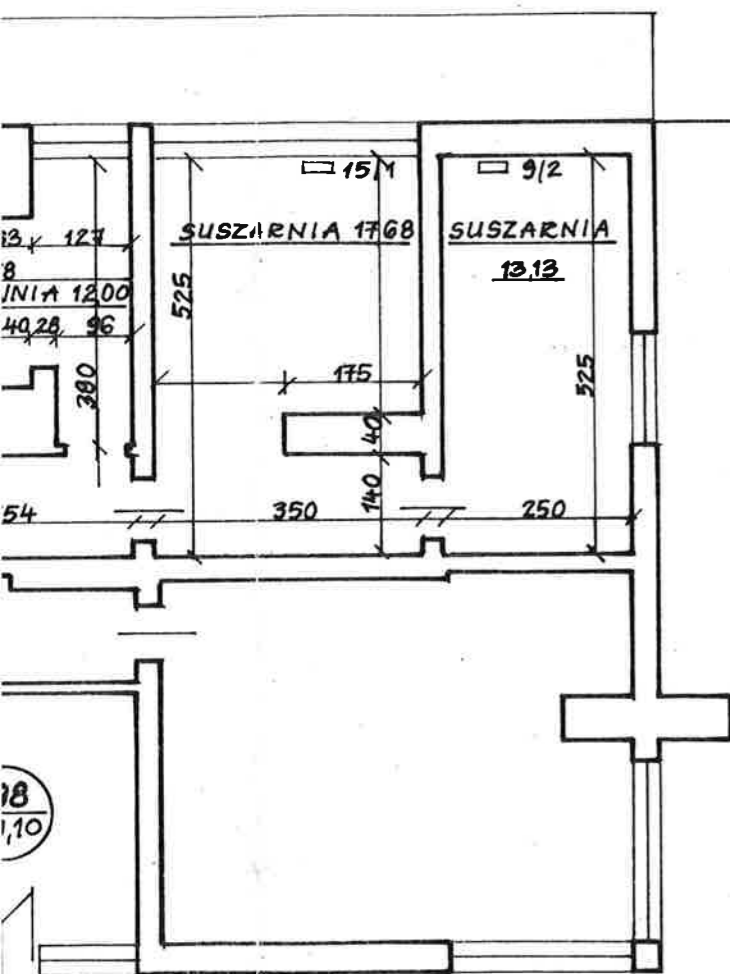


NR 4

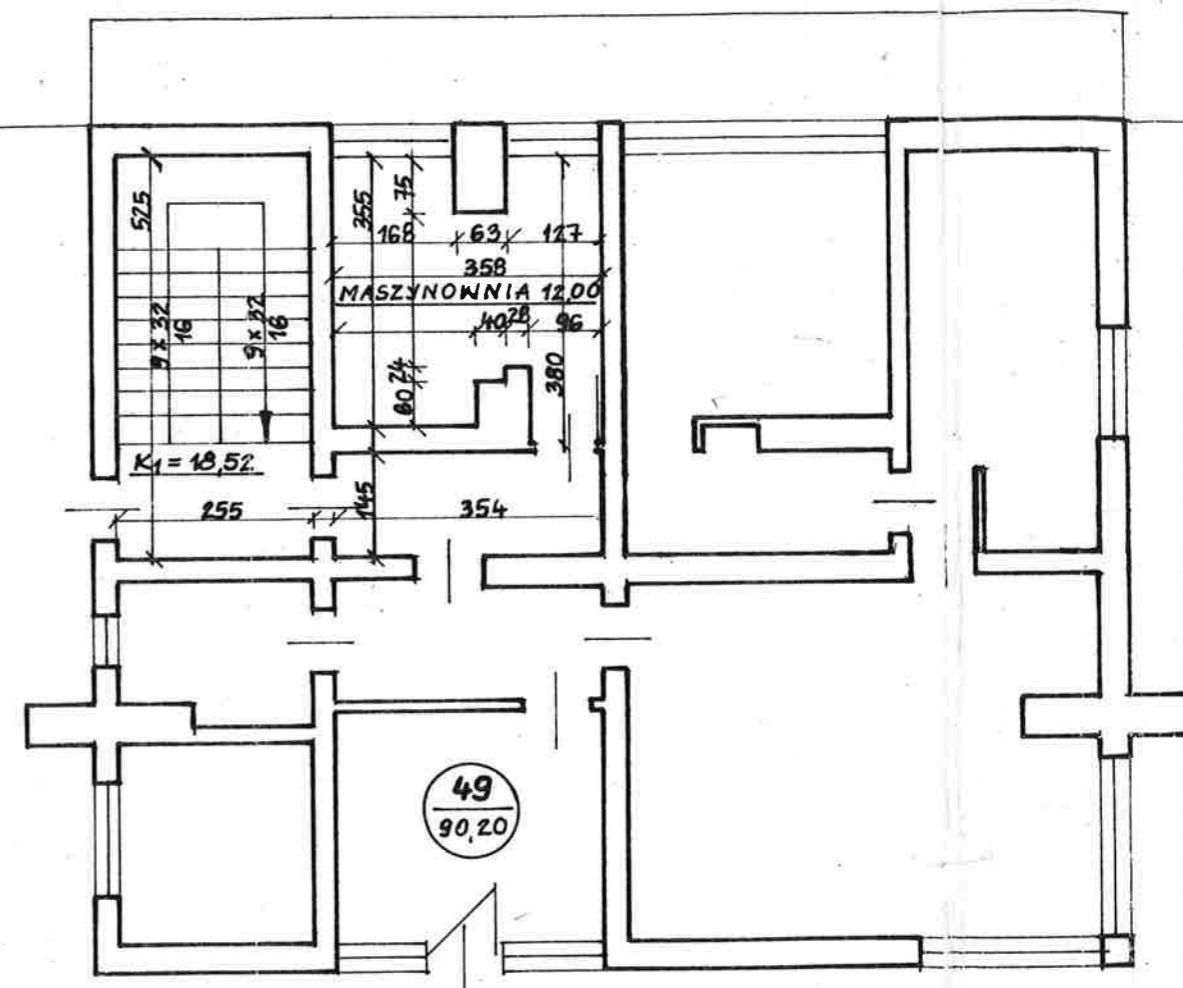


NR 4





NR 2



LEGENDA:

- P1 - POKÓJ 1
- P2 - POKÓJ 2
- K - KUCHNIA
- Ł - ŁAZIENKA
- P.P. - PRZEDPOKÓJ
- K1... - KLATKA SCHODOWA
- 6/1□ - KALORYFER

The floor plan shows a building layout with the following features and dimensions:

- Staircase (Top Left):** A rectangular area with a grid pattern. Dimensions include a total width of 575, a total depth of 255, and individual steps of 32 and 16. The area is labeled $K_1 = 18,52$.
- Machine Room (Top Center):** A rectangular area labeled "MASZYNOWNIA 12,00". It has a width of 358 and a depth of 12,00. Other dimensions include 355, 168, 75, 63, 127, 1028, 96, 8074, and 380.
- Central Corridor:** A horizontal corridor with a width of 354 and a depth of 145.
- Bottom Area:** A large open area with a circular feature labeled "49" over "90,20".

P1 - POKOJ 1
P2 - POKOJ 2
K - KUCHNIA
Ł - ŁAZIENKA
P.P. - PRZEDPOKOJ
K1... - KLATKA SCHODOWA
6/11 - KALORYFER

mgr inż. arch. Halina Abramczyk
40-069 Katowice, ul. Adamskiego 10/11
tel./fax (032) 2518-618 NIP 634-102-19-9

DOMUS PROJEKT	Halina Abramczyk	
40-069 Katowice,	ul. Adamskiego 10/16 tel./fax (0-32) 2-518-618	
TREŚĆ:	INWENTARYZACJA BUDOWLANO-INSTALACYJNA	
	BUDYNKU MIESZKALNEGO	
	TYCHY, UL. DARWINA 2-8	
	RZUT VII PIĘTRA	
PROJEKTANT	mgr inż. arch. Halina Abramczyk	SKALA: 1:100
	Nr uprawnień proj. 1335/94 z dnia 30 grudnia 1994 r	NR RYS: 1